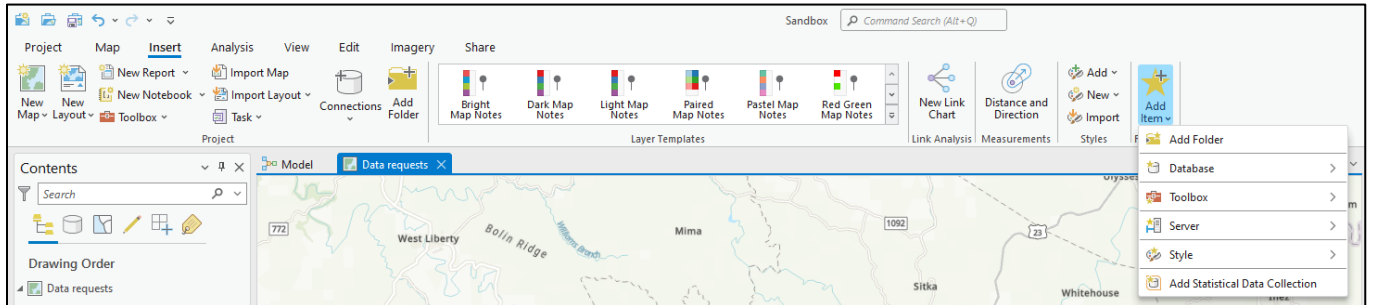
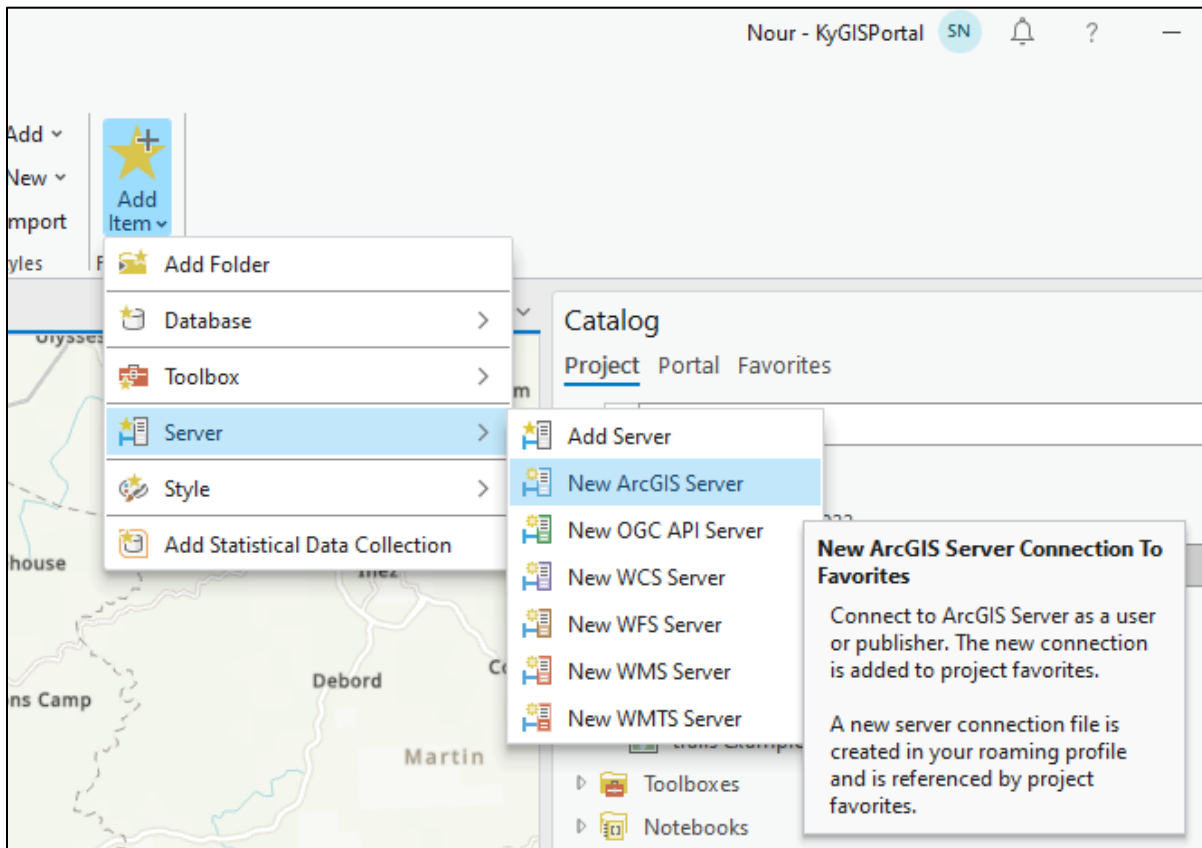


## How to add Kentucky's ArcGIS Server Map or Image Services to ArcGIS Pro

In ArcGIS Pro, navigate to the Insert Tab. Then, click the button named “Add Item” with a star symbol. The same options can be found by navigating to Catalog > Favorites > Add Item:



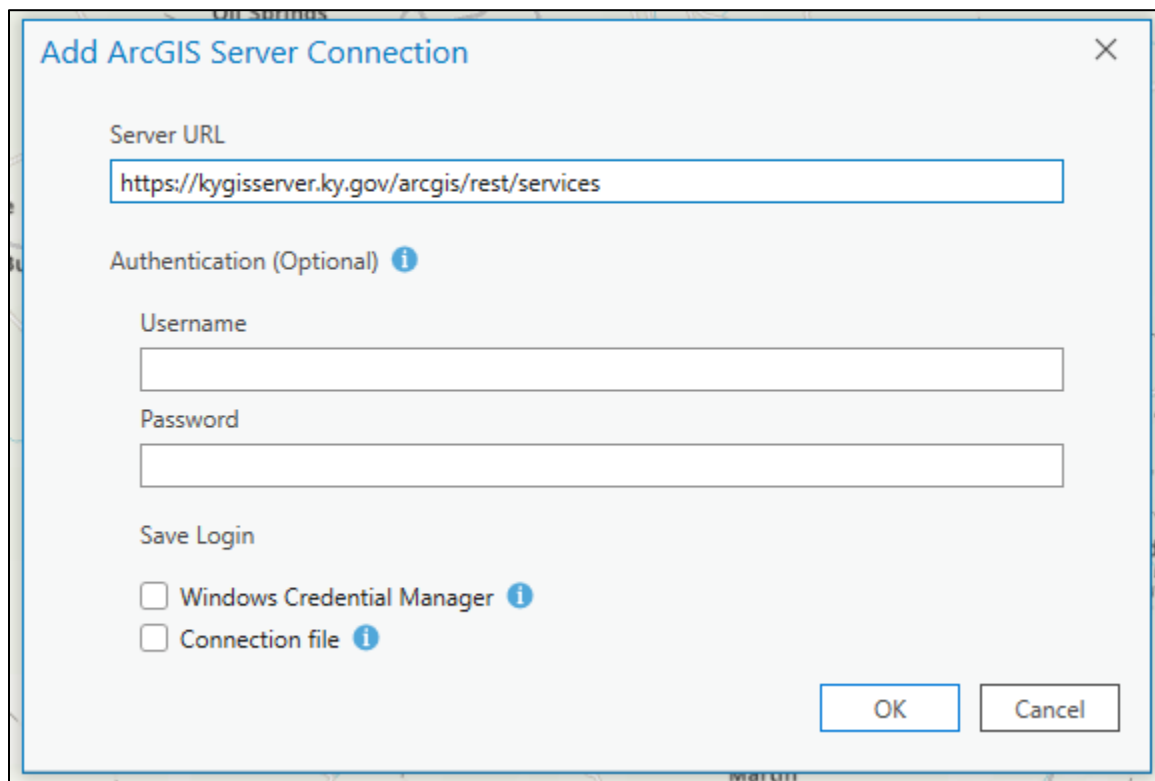
Click “Server”, then “New ArcGIS Server”:



A window will appear entitled “Add ArcGIS Server Connection”.

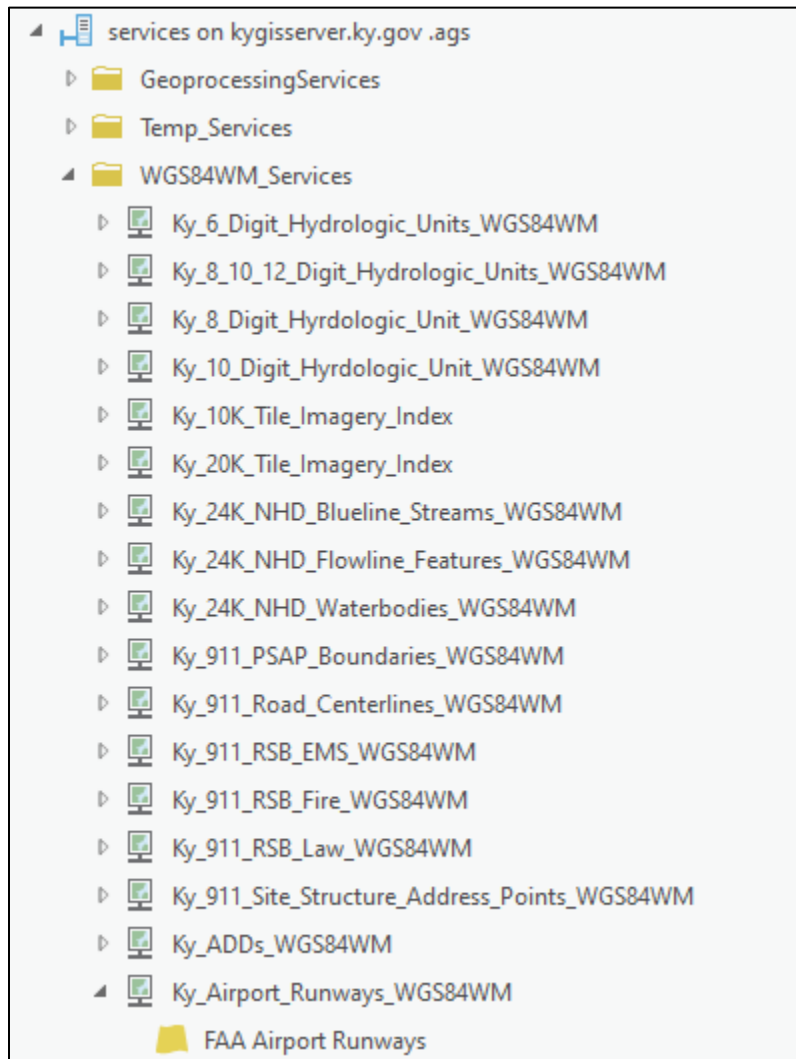
- To connect to Kentucky’s Map Services, paste the following link in “Server URL”  
<https://kygisserver.ky.gov/arcgis/rest/services>
- To connect to Kentucky’s Image services, paste the following link in “Server URL”  
<https://kyraster.ky.gov/arcgis/rest/services>

**No username or password is required.** Click Ok.



The screenshot shows a dialog box titled "Add ArcGIS Server Connection". The "Server URL" field is populated with the text "https://kygisserver.ky.gov/arcgis/rest/services". Below this, the "Authentication (Optional)" section includes "Username" and "Password" input fields, both of which are currently empty. Under the "Save Login" section, there are two unchecked checkboxes: "Windows Credential Manager" and "Connection file". At the bottom right of the dialog, there are "OK" and "Cancel" buttons.

The ArcGIS Server is now visible under Catalog > Favorites. The Server connection can be expanded to visualize all available services



**NOTE for map services:** All of the services in the WGS84WM\_Services folder are provided in a Web Mercator projection. Although these services can be added to ArcGIS Pro they will likely be a bit slow if your ArcGIS Pro Map isn't using the same projection. Essentially, these services are really intended for use web mapping applications but they can be viewed in ArcGIS Pro. It is most efficient to utilize an ArcSDE instance or locally stored vector data in ArcGIS Pro.

**NOTE for image services:** Unlike our map services most all of the image and elevation services are provided in a Kentucky Single Zone projection. Additionally, a subset of the services is also provided in Web Mercator and are designated with a "\_WGS84WM" suffix. Items with a "\_IR" suffix are setup to display as false color infrared.